

**ATLANTA YACHT CLUB
WOMEN'S CHAMPIONSHIP
September 5, 2021**

SAFETY

The Atlanta Yacht Club STRONGLY recommends that all competitors wear an approved (US Coast Guard or Canadian) personal floatation device.

1. Rules

1.1 The races will be governed by the rules as defined in *The Racing Rules of Sailing*. (RRS)

2. Notice To Competitors

2.1 Notices to competitors will be posted on the Official Notice Board located across from the fish pond.

3. Changes In Sailing Instructions

3.1 Any changes to the sailing instructions will be posted by 0800 on the day it will take effect, except any change to the schedule of races will be posted by 2000 on the day before it will take effect.

4 Signals Made Ashore

4.1 Signals made ashore will be displayed on the Race Committee Signal Boat along side the dock.

4.2 When flag AP is displayed ashore '1 minute' replaced with 'not less than 20 minutes' in the Race Signal AP.



5. Schedule of Races

9:00am Competitors meeting.
9:30am Thirty minute signal.
9:55am Warning signal first race, second race to follow.
Lunch break, more racing after 30 minute signal.
No races will be started after 4:00pm

6. Class Flags

Y-Flyer Class flag or Yellow Flag

7. The Course

7.1 The diagrams show the courses, including the approximate angles between legs, the order in which the Rounding Marks are to be rounded or passed, and the side on which each Rounding Mark is to be left.

7.2 The identifying letter(s) of the course will be displayed on the top of the Signal Boat.

8. Marks

8.1 Rounding Marks 1, 2 & 3 and Gate Marks will be yellow Tetrahedrons. New Rounding Marks when used in accordance with SI 10.1, Change of Course, will be original marks with a black band.

8.2 The starting and finishing marks will be a Race Committee boat displaying an orange flag (start) or blue flag (finish) and a nearby orange cylinder.

9. The Start

9.1 The race committee will make one sound signal twenty-five minutes prior to the warning signal of the first race of the day.

9.2 A Boat starting more than 10 minutes after her starting signal will be scored Did Not Start (DNS). This changes Rule A4.

9.3 The starting line will be between the staff displaying an orange flag on a Race Committee Boat and the course side of a nearby orange cylinder.

9.4 The Race Committee will attempt to hail the sail numbers of OCS boats after the starting signal. The failure of any boat to hear the hail, the hail of some but not all OCS boats, the untimely hail of some or all OCS boats, or failure to hail any or all boats shall not be grounds for granting redress. This changes RRS 62.1.

10. Change of the next leg of the course

10.1 To change the next leg of the course the Race Committee will lay a Black-banded Rounding Mark (or move the finishing line) and remove the original Rounding Mark as soon as practical. When in a subsequent change a black-banded Rounding Mark is replaced, it will be by an original Rounding Mark.

11. The Finish

11.1 The finish line will be between the staff displaying a blue flag on a race Committee boat and the Course side of a nearby orange cylinder.

12. Time Limit

12.1 The time limit for the first boat to reach the first Mark is 30 minutes and two (2) hours to finish. If no boat has passed the first Mark in time, the race shall be abandoned.

12.2 If a boat or boats in a race may delay the start of another race, the race committee may score that boat or those boats in the place she/they would have finished and terminate the race. This changes rule 35, A4, and A5 in that boats may be scored in their finishing place by being finished on course.

13. Penalty System

13.1 RRS Appendix V, (both V1 and V2) Alternative Penalties, will apply.

14. Protests and Request for Redress

14.1 A boat intending to protest about an incident that occurs in the racing area shall notify the Race Committee Finish Boat of her intention and receive acknowledgement. This is in addition to Rule 61.1(a).

14.2 Protest forms are available on the Signal Boat and the Official Notice Board. Protest time ends thirty (30) minutes after the docking of the Race Committee Signal boat.

15. Scoring

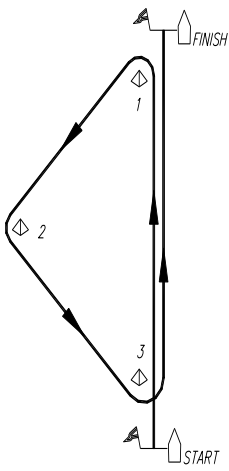
15.1 The Low Point Scoring System, RRS Appendix A, will apply.

15.2 One race constitutes a regatta.

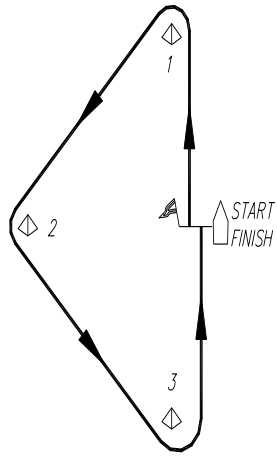
16. Disclaimer of Liability

Competitors participate in the races entirely at their own risk. See rule 3, Decision to Race. The organizing authority will not accept any liability for material damage or personal injury or death sustained in conjunction with or prior to during, or after the races.

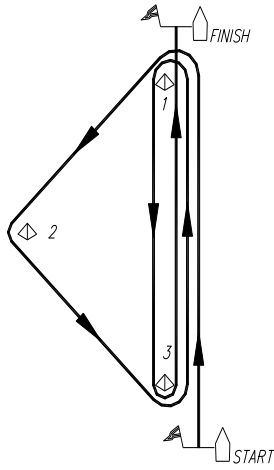
Course Diagrams



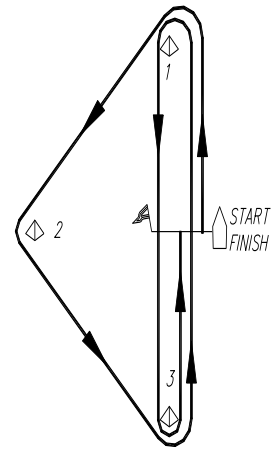
COURSE "T" 2



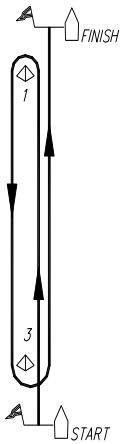
COURSE "MT" 1



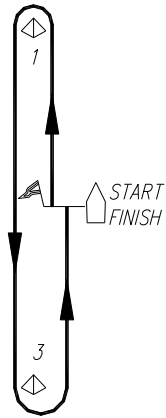
COURSE "O"



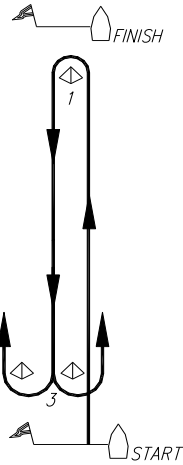
COURSE "MO"



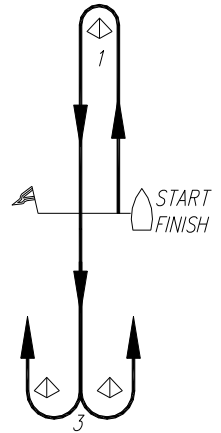
COURSE "W" 2



COURSE "MW" 1



COURSE "WG" 2



COURSE "MWG" 1

Notes:

1. For courses "MWG", "MW", and "MT"; a number posted after the course indicates how many laps are to be sailed.
2. For courses "WG", "W", and "T", a number posted after the course indicates how many laps are sailed before the final windward leg.
3. Actual angle between legs may vary depending on wind direction and available space in the racing area.